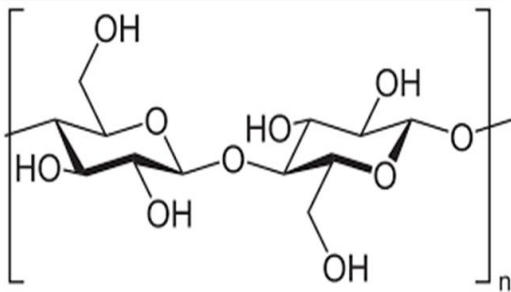


Cellulose Coatings for Sustainably Serving Sushi

- Single-use plastic packaging contributes significantly to total plastic waste
- To reduce waste from this product area, our goal is to provide an affordable and equivalent packaging option



- Cellulose is a naturally occurring bio-polymer; it is biodegradable and can be sustainably sourced
- Cellulose nanofibers (CNF) are processed from raw cellulose sources and can be used to make food packaging



- Carbon Black (CB) is processed from waste materials and chemicals
- It can be used as a filler agent in plastic/rubber composites
- Food grade CB can be used as an effective pigmenting agent to give packaging composites an aesthetic appearance



- Using CNF and CB, we can make PFAS-free coatings for molded pulp trays, turning otherwise cheap trays into effective ready-made sushi containers



- These trays could affordably replace single-use plastic containers that contribute to total plastic waste

